

INSTALLATION

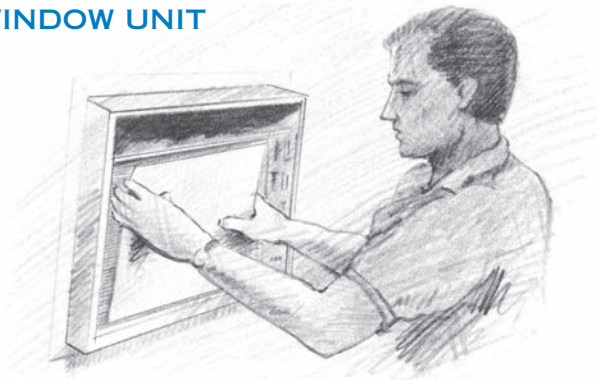
Simply remove your present inefficient disposable filter and replace it with an ElectroMaze air filter. No special electrical hookup or system modification is required. It's just that simple! It goes to work for you immediately and will give you years of trouble-free service.

FILTER GRILL



SELF
CONTAINED
UNIT

WINDOW UNIT



LIFETIME WARRANTY

ElectroMaze warrants its products to be free from defect in material and workmanship, at the original place of installation, for the life of the unit in which it is installed. ElectroMaze will repair or exchange any of its products defective in material or workmanship. Repairs or exchanges are limited to the original purchaser.

General Conditions

This warranty shall not apply to any ElectroMaze filter which has been modified or altered in any way, or which has been subject to misuse, excessive heat, exposure to ultra-violet light, or improper installation.

electroMaze[®]
air filters

Classified by
Underwriters Laboratories Inc.
to ANSI/UL 900



SEE YOUR AUTHORIZED DEALER!

ElectroMaze has a policy of continuous product research and improvement and reserves the right to change design and specifications without notice.

© Copyright 2009. All Rights Reserved.

Printed in U.S.A.

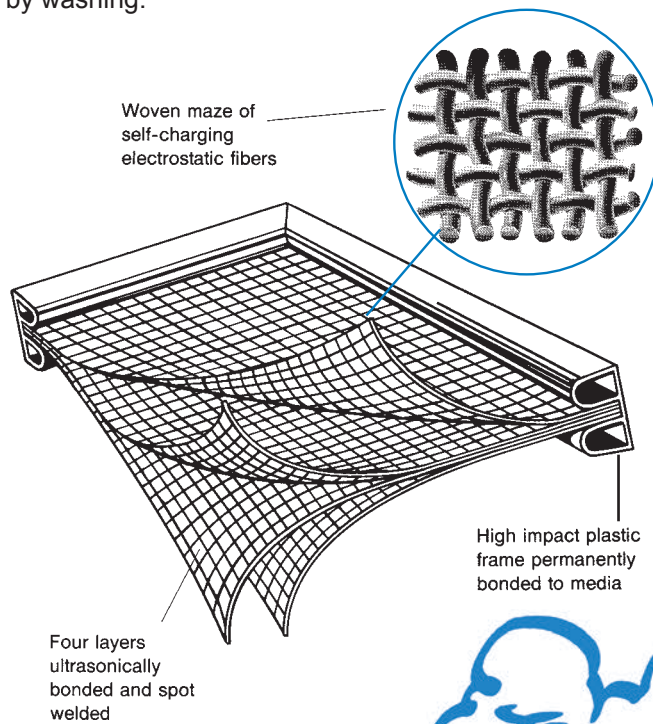
electroMaze[®]
air filters





YOU CAN HAVE CLEAN AIR IN YOUR HOME ALL THE TIME.

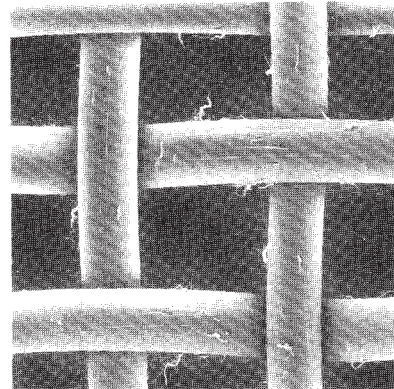
ElectroMaze Air Filters clean the air by using static electricity, a safe, naturally occurring phenomenon. An electrostatic charge is generated by air flowing through a maze of static prone fibers. Airborne particles are attracted and held by the static charge, until released by washing.



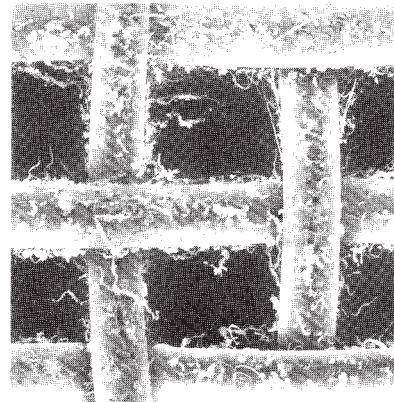
ELECTROSTATIC FILTRATION

Illustrations below show typical dust loading pattern of the electrostatic fibers. This unique characteristic improves air flow while providing maximum filtration.

CLEAN FILTER



DIRTY FILTER



CLEANING IS QUICK & EASY



On a monthly basis (more often if needed) follow these easy steps . . .

- Simply remove the air filter
- Rinse both sides with running water
- Spray with household cleaner to remove stubborn stains
- Rinse thoroughly to remove remaining dirt
- Drain excess water and reinstall

